



Professional Crane Inspections (PCIs)
Provided by Gottwald's Service Department

The Basic PCI

Evaluation of the General State of the Crane

A Basic PCI involves a thorough examination of the operational safety and general state of a crane. The scope of supplies and services of the Basic PCI covers:

- visual inspection of the crane
- functional test of hoist, slewing, luffing and travel gear units
- testing of safety functions (e.g. limit switches, switch-off points and emergency stop functions)
- inspection of secondary systems such as job site lighting and air conditioner
- recording of any existing defects and damage
- detailed inspection report including photo documentation and recommendations.

To perform a Basic PCI, a Gottwald expert generally requires two days per crane.



BASIC PCI

OPTIONS

Oil and Grease Analysis

The state of the components, even the non-accessible ones in the drive units, can be derived from an analysis of the oil and grease. If necessary, preventative maintenance work can then be recommended.

Steel Construction Crack Testing

Cracks in the steel structure, which are not necessarily visible to the naked eye, can easily be identified by a steel structure crack detection test.



An All Important Service Tool

Professional Crane Inspections (PCIs)

The multi-faceted services provided by Gottwald's Service Department ensure a long lifetime for your Gottwald product and can be performed on Harbour Cranes over their entire service life. Professional Crane Inspections (PCIs) are one of the solutions in Gottwald's comprehensive range of services.

A Professional Crane Inspection performed by Gottwald experts provides the operators of Harbour Cranes with a qualified statement on the current state of the crane including recommendations on work that needs to be carried out. The results of a PCI are of particular importance when refurbishments or a sale of the crane are being considered but are also invaluable to confirm the quality of maintenance work carried out by the crane operators themselves.

In line with the differing needs of customers, Gottwald's Service Department offers two different kinds of Professional Crane Inspections and a number of options: the Basic PCI and the Premium PCI.



The Premium PCI

A Thorough Examination

The in-depth examination of the Premium PCI includes an oil & grease analysis and a steel construction crack test.

The complete scope of supplies and services of the Premium PCI includes:

- visual inspection of the crane
- functional test of hoist, slewing, luffing and travel gear units
- testing of safety functions (e.g. limit switches, switch-off points and emergency stop functions)
- inspection of secondary systems such as job site lighting and air conditioner
- recording of any existing defects and damage
- steel construction crack testing
- laboratory checks of hydraulic fluid, gear oil (from the hoist and slewing gear), diesel engine oil and slew ring grease
- detailed inspection report including photo documentation and recommendations.

To perform a Premium PCI, two Gottwald experts generally require two days per crane.

PREMIUM PCI

OPTIONS

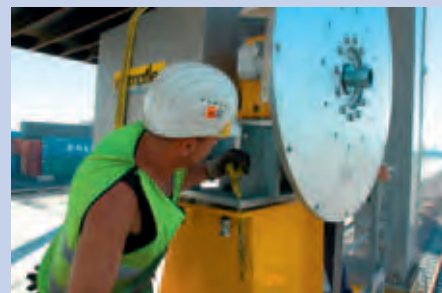
Determination of the Remaining Service Life

The remaining service life of a Gottwald Harbour Crane, is information which is particularly valuable prior to making major investment decisions. Depending on the result, retrofits or replacement of the crane may be the most cost-effective alternative.

Determination of the Residual Value

The determination of the residual value, i.e. the theoretical value of the

crane at the time of the PCI, is of particular interest before a planned resale of a Gottwald Crane and simplifies negotiation of a reasonable sales price.



Fax Reply

Please detach and fax to: +49 211 7102-3740

For contact details including the fax number of your local Gottwald partner, please visit www.gottwald.com

■ **Please forward information about:**

- The Basic PCI
- The Basic PCI + Options
- The Premium PCI
- The Premium PCI + Options

■ **Sent by** (Please print):

Company: _____

Position/title: _____

First and surname: _____

Address: _____

Phone: _____

Fax: _____

E-mail: _____

■ **Detailed information of crane:**

Serial no.: _____

(e.g. 828 XXX)

Crane location: _____

(e.g. harbour basin XY, Dock 1234)

Gottwald Port Technology GmbH • Postfach 18 03 43 • 40570 Düsseldorf, Germany
Phone: +49 211 7102-0 • Fax: +49 211 7102-3740 • info@gottwald.com • www.gottwald.com

Gottwald Port Technology GmbH – A subsidiary of Demag Cranes AG



Gottwald Services

Holistic Solutions from a Single Source

The reliable service provided by Gottwald ensures that your Gottwald machines are maintained at the highest possible level of availability while securing the value of your investments.

To this end, we have developed a full range of services for your Gottwald products to meet all their service needs.

Service packages



Crane transport



Assembly and commissioning



General overhauls

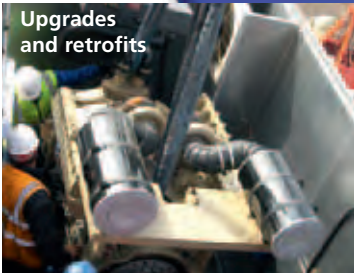


Gottwald provides customer orientated service for all your new and existing Gottwald products for their entire service lifetimes.

Professional Crane Inspections (PCI) and maintenance contracts



Upgrades and retrofits



Repairs



Spare parts supply



Gottwald Port Technology GmbH • Postfach 18 03 43 • 40570 Düsseldorf, Germany
Phone: +49 211 7102-0 • Fax: +49 211 7102-3740 • info@gottwald.com • www.gottwald.com

Gottwald Port Technology GmbH – A subsidiary of Demag Cranes AG

