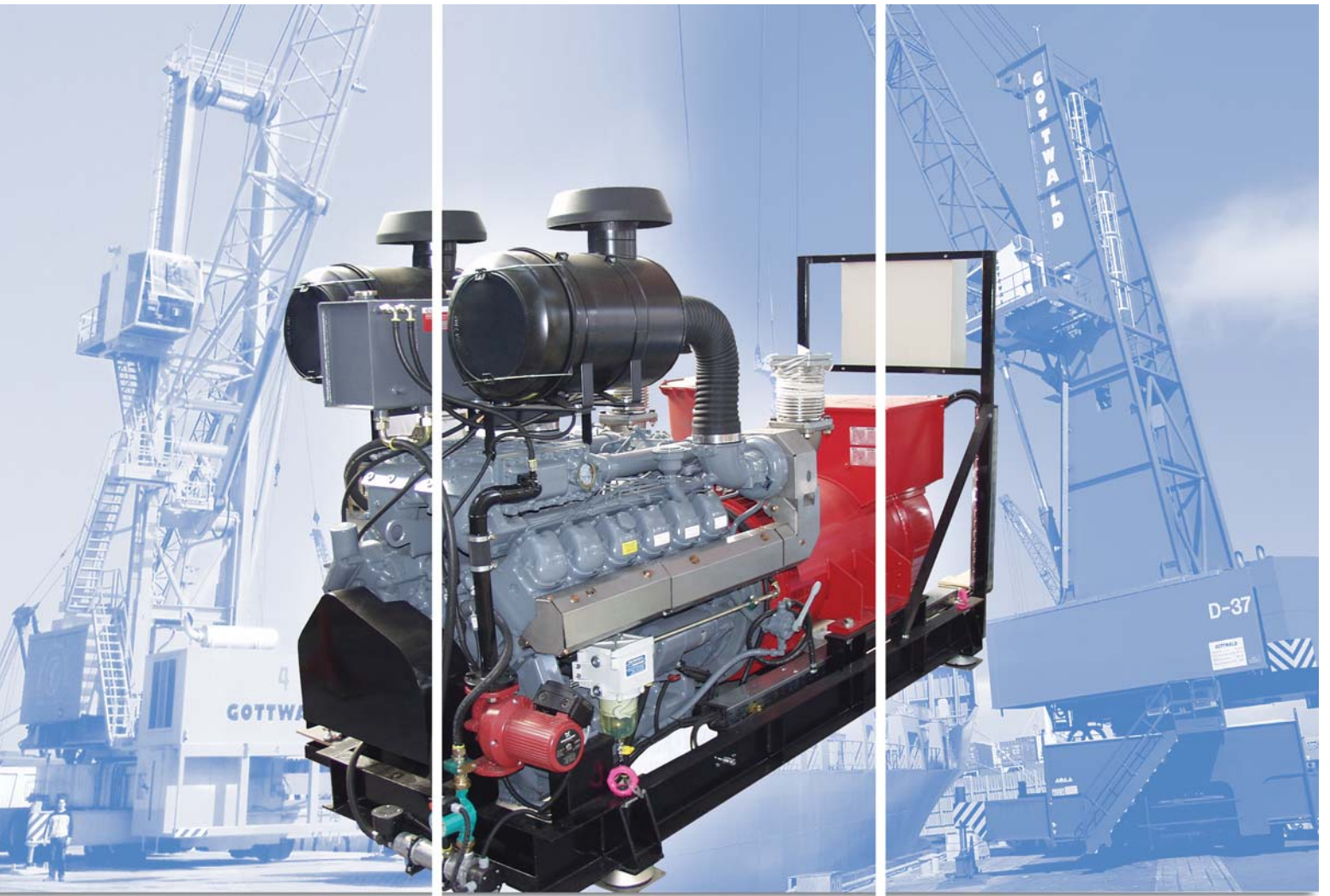


## HMK Upgrades



Cut Your Operating Costs Long-Term  
**Engine Replacement for HMK 170, 260 and 280**

# Systematic Upgrades

## MAN D2842 Diesel Engine or the Full Power Pack

### Upgrades are a Key Aspect of our Service Portfolio

Having sold some 1,300 crane units, we are the world's No.1 in the field of Mobile Harbour Cranes. In operation for many decades, Gottwald cranes have proved to be reliable and economical.

To ensure that these features are guaranteed throughout the crane's service life and to adapt it to meet current and future technical and commercial demands, more and more customers are applying upgrades.

### Diesel Engine Upgrades

Ever-tighter environmental requirements are driving the development of new diesel engines. At the same time, the older engines are no longer being manufactured. For operators of older Gottwald cranes, this means that spare and replacement parts are not available as easily or quickly and will become more expensive.

In view of this, it is worth considering whether it is more economical for the future to keep buying ever more expensive spares or to invest in a state-of-the-art engine and boost productivity at the same time.

Where an engine has been in service for a long period and is due for an overhaul, it might indeed be more economical in the medium and long term to fit a replacement engine with all the advantages such as extending service intervals long-term, ensuring the availability of spares, meeting environmental requirements and reducing future operating costs.

As a replacement for older or "high-mileage" engines, we are able to offer the following package based around an MAN unit:

- MAN D2842 diesel engine
- Base frame and radiator
- Air filter
- Exhaust silencer
- Compensator
- Electrics cabinet
- Complete piping
- Clutch

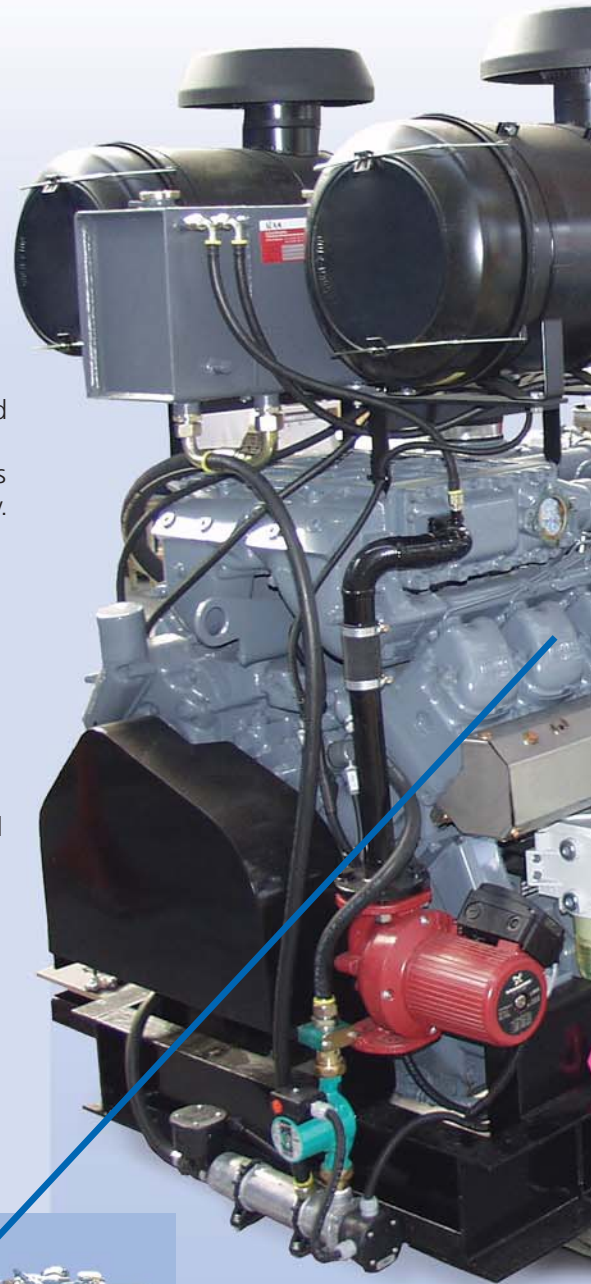
### Power Pack – Diesel Engine plus Generator

Those customers who decide to replace the entire drive unit, that is, the diesel engine, auxiliary drives and generator, will benefit from the Gottwald Power Pack which provides guaranteed and sustained availability.

### You Benefit from Retrofitting

Retrofitting a new diesel engine or Power Pack provides the following advantages:

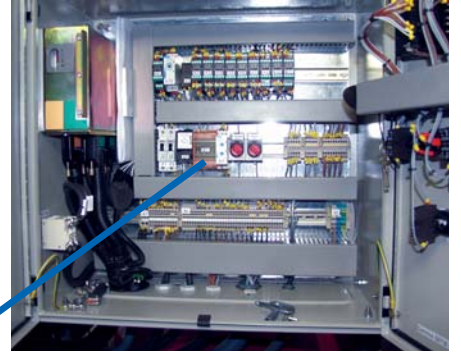
- Reduced fuel consumption, exhaust emissions and noise
- Service intervals become three times as long – where beforehand servicing was every 250 hours, after retrofitting it is every 800 hours
- Excellent steady and peak load durability
- Much improved service lifetime



MAN D2842: this state-of-the-art, low-emission 12-cylinder diesel engine produces 640 kW at 1,500 rpm; 750 kW at 1,800 rpm



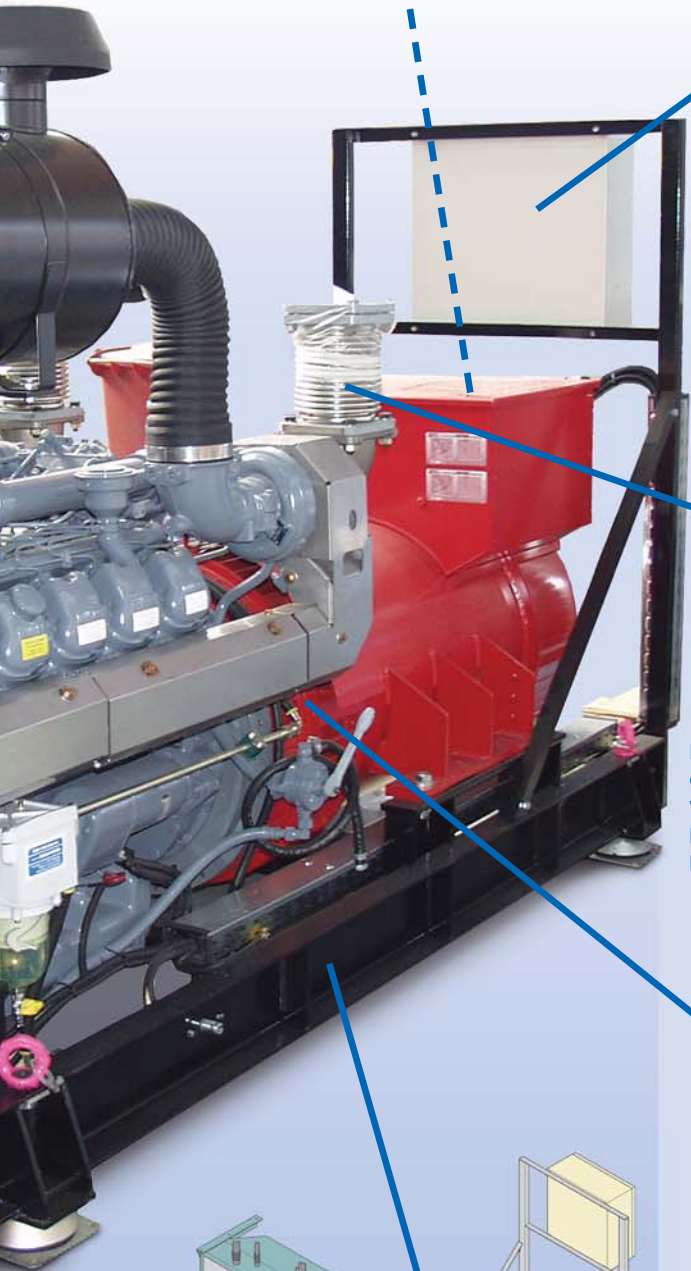
Generator



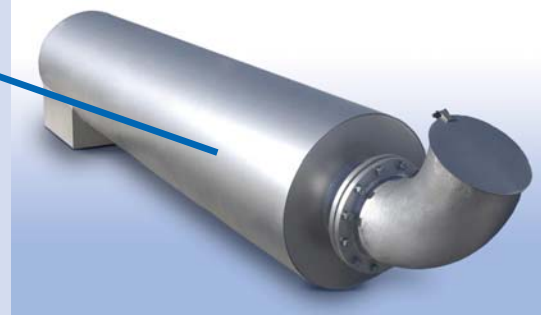
The completely pre-assembled electrics cabinet can be directly connected up

**Order our Drive Unit Upgrade and you will receive:**

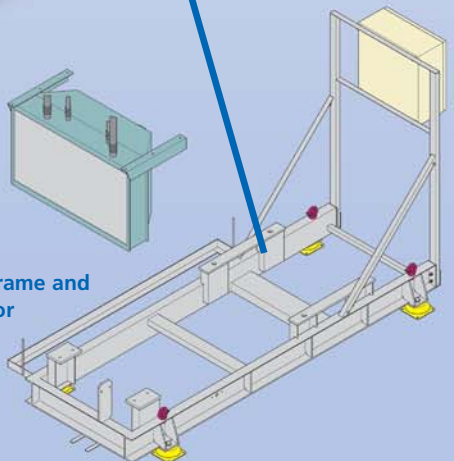
- In-depth advice and planning
- Refitting and test-run
- Full warranty for 12 months



MAN diesel engine or full Power Pack will be supplied pre-assembled and pre-tested



The exhaust silencer guarantees optimum noise reduction and its innovative filter technology keeps emissions to an absolute minimum



Base frame and radiator



The maintenance-free clutch guarantees both minimum vibrations and extended service life

# Comprehensive Service from Gottwald

Rich in Ideas, Innovative, Responsive and Flexible

As the world's leading manufacturer of Mobile Harbour Cranes, providing our customers with the full range of skilled and capable services is a matter of pride. These services are not merely based on a comprehensive range of existing services, but are constantly reviewed to ensure currency and compliance with customer needs.

Our service portfolio currently includes field service, troubleshooting, spare parts, service agreements, 24-hour call-up, crane personnel instruction and documentation.

We are supported by a worldwide network of Service Representatives who possess excellent technical skills and have a good command of the respective local language, paving the way for smooth communication.

Within the context of our highly customer-driven service strategy, we have developed a wide range of upgrades.

## Upgrades for Mobile Harbour Cranes

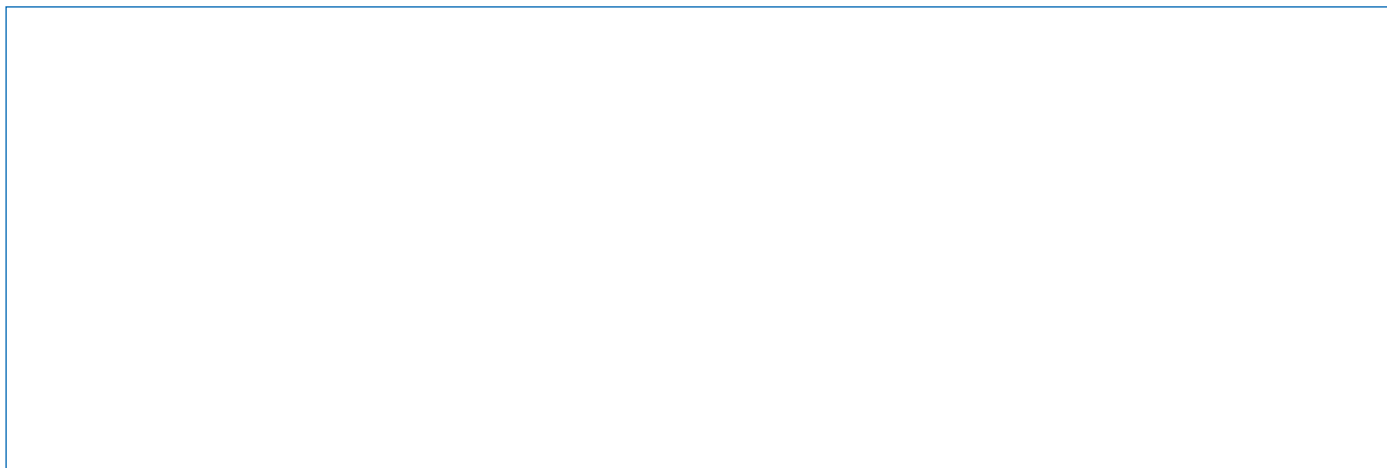
- Diesel engine
- Diesel generator unit (Powerpack)
- Controller system from S5 to S7
- External power supply
- Slot PLC
- Radio remote control system



Fitting the latest generation control unit provides the highest level of diagnostics

[service@gottwald.com](mailto:service@gottwald.com)

## Regional Service Station



Gottwald Port Technology GmbH • Postfach 18 03 43 • 40570 Düsseldorf, Germany  
Phone: +49 211 7102-0 • Fax: +49 211 7102-3740 • [service@gottwald.com](mailto:service@gottwald.com) • [www.gottwald.com](http://www.gottwald.com)

Gottwald Port Technology GmbH – A subsidiary of Demag Cranes AG

